



WWW.AMBERGLASS.PL

GLASS IN
ARCHITECTURE



14

16

21

20

22

23

19



IN AMBER-GLASS

In our company, we are working on developing our production capabilities to support our customers and business partners. Our modern and constantly evolving machinery park enables us to serve our customers in areas such as cutting, grinding, drilling, bevelling, engraving, printing, laminating and tempering glass, as well as cutting other materials using a 5-axis Waterjet machine.

USE OF SPECIAL GLASS

Anti-reflective glass prevents light from reflecting due to a special coating, and performs better in rooms with strong artificial lighting.





USE OF GLASS IN INTERIOR DESIGN



MIRRORS IN INTERIORS

We have a wide selection of mirrors with different colors and textures that will perfectly highlight what is most beautiful in this interior.

DECORATIVE ELEMENT

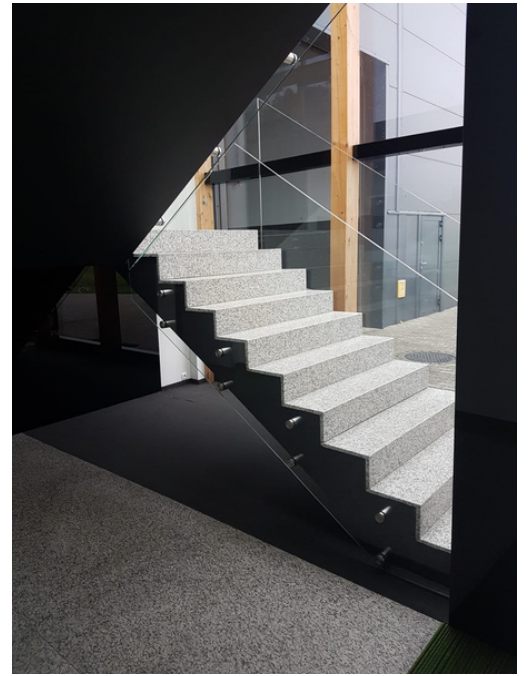
We have the ability to cut mirrors into any shape, achieving a unique interior in this way.





BALUSTRADES AND GLAZINGS

Finishing stairs or mezzanines on the upper floor is a functional and aesthetic solution.



9 | _____





GLASS ELEMENTS

Ceramic printing allows for glass refinement by using personalized graphics. With our printer, we are able to achieve a spectacular finish for interiors.



GLASS ELEMENTS

Perfect solution for finishing saunas





GLASS ELEMENTS IN BUSINESS INTERIORS





GLASS WALLS

The solution that companies reach for in their offices. They create a visually unique workspace in this way.







EXTERIOR ARRANGEMENTS
Using glass elements for balustrades and glass roofs.

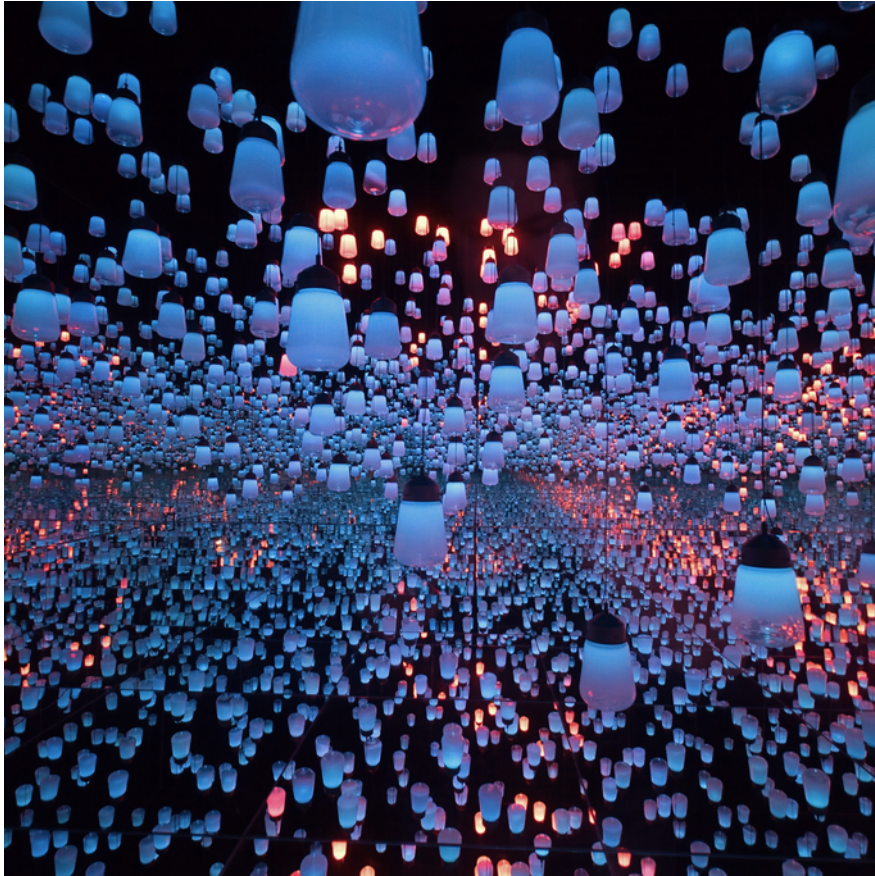






OTHER INSPIRATIONS

The use of glass elements that we are able to make for our customers.



INFINITY ROOM

The use of mirrors in visual arrangements.





GLASS DECORATIVE ELEMENTS

Glass, stone, or wood as a decorative element thanks to the possibility of cutting with Waterjet.





CERAMIC PRINT

This is a solution that will certainly give glass and the interior character, limited only by our imagination.







C O N T A C T

W W W . A M B E R G L A S S . P L

E - M A I L : B I U R O @ A M B E R G L A S S . P L

P H O N E + 4 8 6 9 5 9 9 9 9 6 5